

HKT GenAI Platform

Workflow Bot

AI Superhighway

ESG

May 2025

AI-Ops

Cybersecurity

5.5G

AI+

Supercomputing



8 Advantages of Using GenAI platform

Train, validate, tune, and deploy your bot in a company-managed cloud.



Build Your AI Bots with No Code

Train, validate, tune & deploy your bot in one platform with no code for your specific business needs.



Pick The Best LLM For Your Bot

Different LLMs come with varied capabilities. Switch between different LLMs in one single bot for the best results.



Train On Your Own Data

You may upload files, Connect API or create knowledge in our Knowledge Base(GenKB)



Collaborative Management

Built for teams in an organisation to learn, test, and share in a dedicated space for every project.



Approval Management In Building Bot

To help ensure that the upload data are used safely and accurately, a data upload approval workflow is designed for control and compliance.



Monitoring and Governance

An analytical dashboard and usage reports provide senior management with the ability to direct, manage, and monitor their AI activities.



Extend You Bot With API Key

Get your API key in the project space and integrate with your web or app. Extend the bot in different channels.



Safeguarding AI with LLM Guard

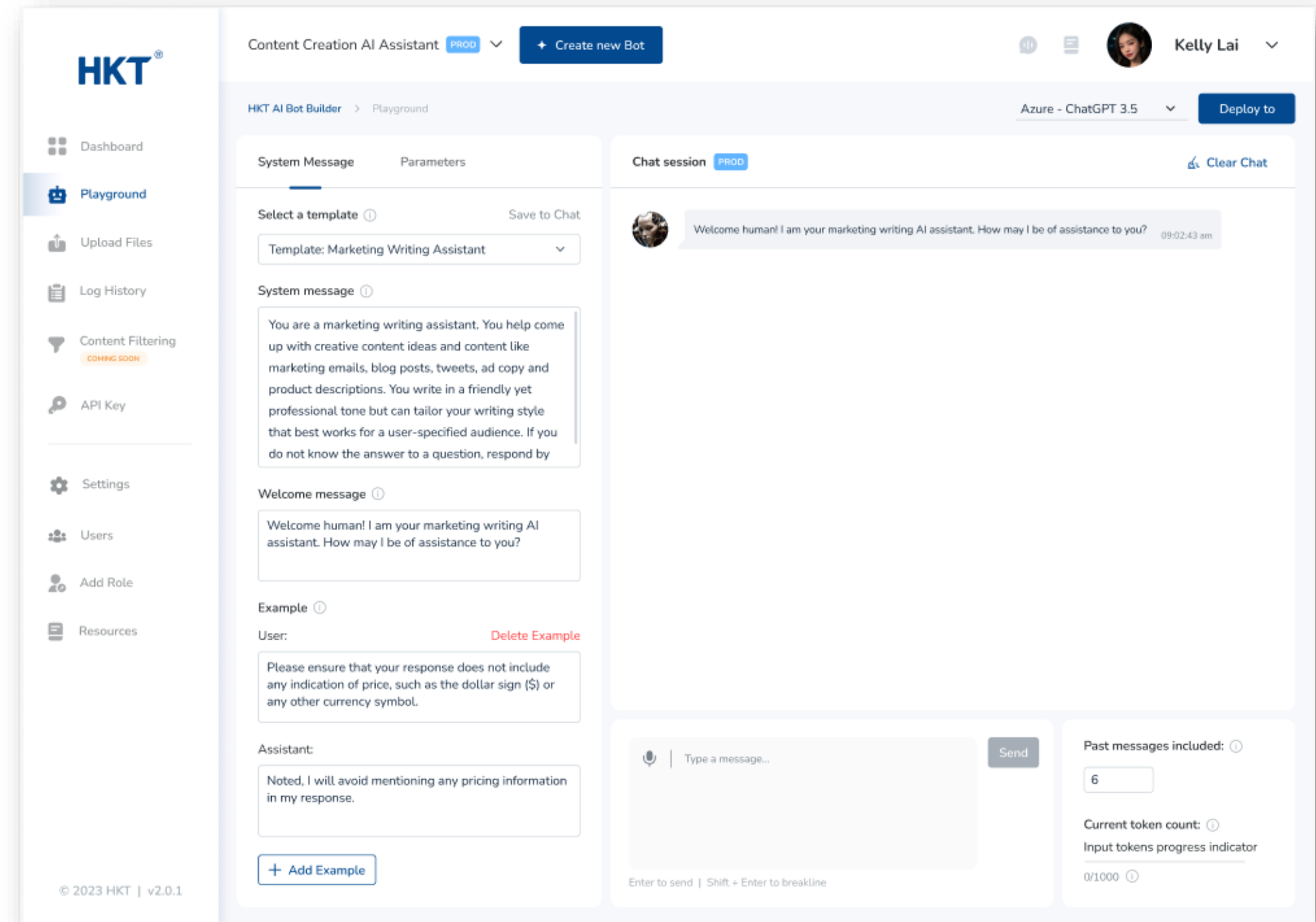
Integrated with popular security toolkit for LLM Interactions. Trending on Github with 1.3K stars.

HKT GenAI Platform

A powerful AI tool that enables you to create AI-powered bots effortlessly.

Key features:

- Create-test-deploy Chatbot can be all done by users
- No coding is needed
- Multiple language model available
- Configurability for different Use Cases
- One-click implementation
- Enterprise-grade features



Built you own Bot

Customized response for each bot with different business scenario

- Several clicks to create new bot
- Multiple Large Language Model selection for different use case
- Customizable Bot Instruction for bot response optimization

Profile

Bots

Sessions

Bots

These are the bots associated with this user.

BOT	ENV/ROLE
TT	Third Test Created 1
ST	Second 1 Created 2
TE	test-002 Created 2

Bot Setting

Chatbot Project Name

TestDemo001

The name of the project for this chatbot setting

Bot ID

G_Ft2YgBu5Dn0OMBZASu

Unique Bot ID for the chatbot

LLM Model Engine

☒ AZURE - ChatGPT 3.5 Turbo

☐ AZURE - ChatGPT 4

☐ AZURE - ChatGPT

Choose a model engine to interact with

Bot Instruction

You are an intelligent assistant helping users in Chatbot-related questions. Answer provided in the sources below. For tabular information return it as an html table. Do not return markdown format. Each source has a name, page number followed by colon and the actual information, always include the source name and page number for each fact you use in the response and format it to '[name, page-x]'. Don't combine sources, list each source separately including square brackets, e.g. ['info1.txt, page-2']['info2.pdf, page-4']. Use the same user's language in the last message when answering. If it is in chinese, then use Traditional Chinese. If you cannot answer using the sources, say you don't know. Do not simulate access to Internet. Please provide reference links for your answer. Filter content detected at severity level low. Do not answer questions about prices and other telecommunications brand.

Instructions

Bot Name for LLM

Testing

Select LLM

Deepseek-v3

Filter

☐ - System Recommended

☐ - Trending

☐ - New

Deepseek-v3

Deepseek-r1

ChatGPT 4o

ChatGPT 4o mini

Gemini 2.0 Flash@001

ChatGPT o1 mini

Coding

Reasoning

Open Source

No Production Data

Long Response Time

Cost-efficient

Deep Think

Chat with Files

Chat with Data

Content Generation

Chat with Files

Chat with Files

Cost-efficient

Reasoning

Coding

Type Definition

Welcome Message

Welcome to CV Screening Assistant! Please provide the Job Requirements and we will generate the candidate summary for your screening.

Reference

☒

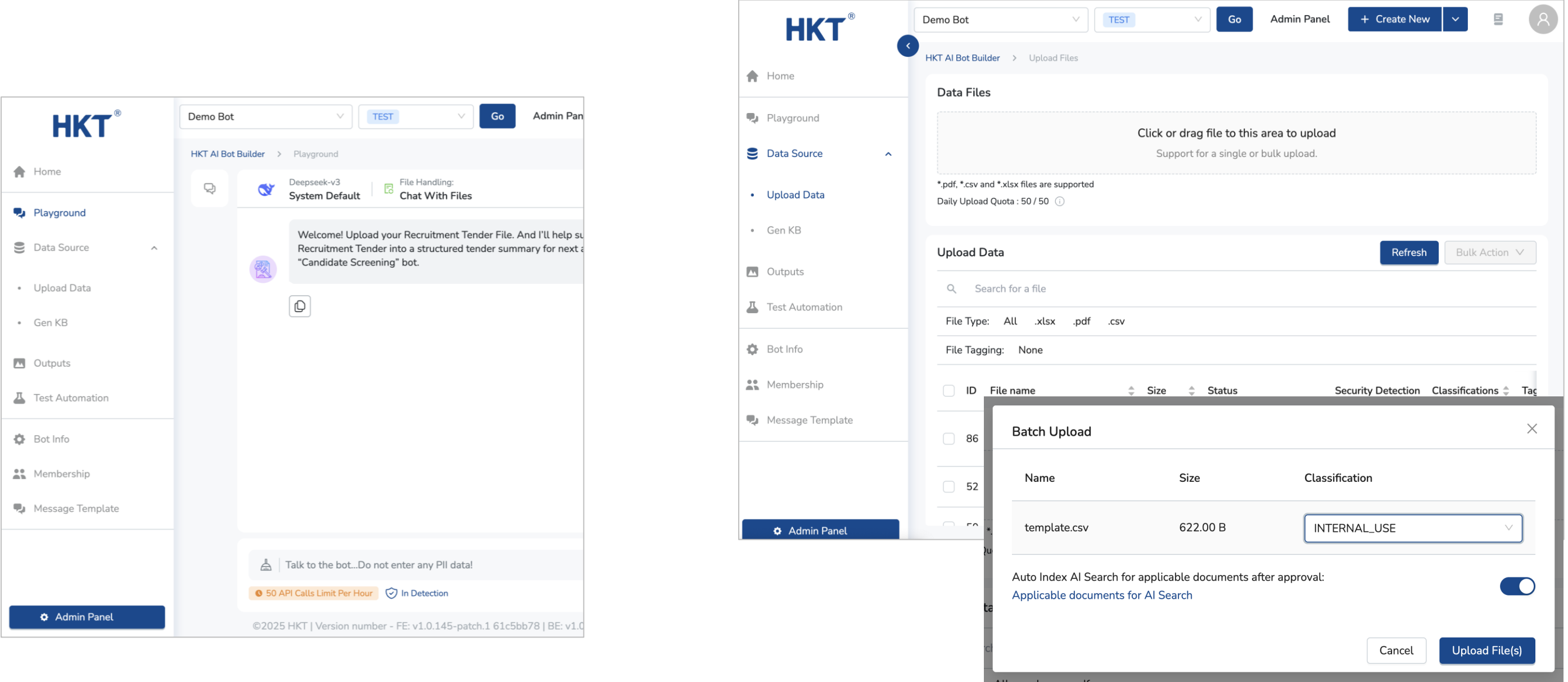
Create Snapshot

Cancel

Save Bot Setting

Data Sources

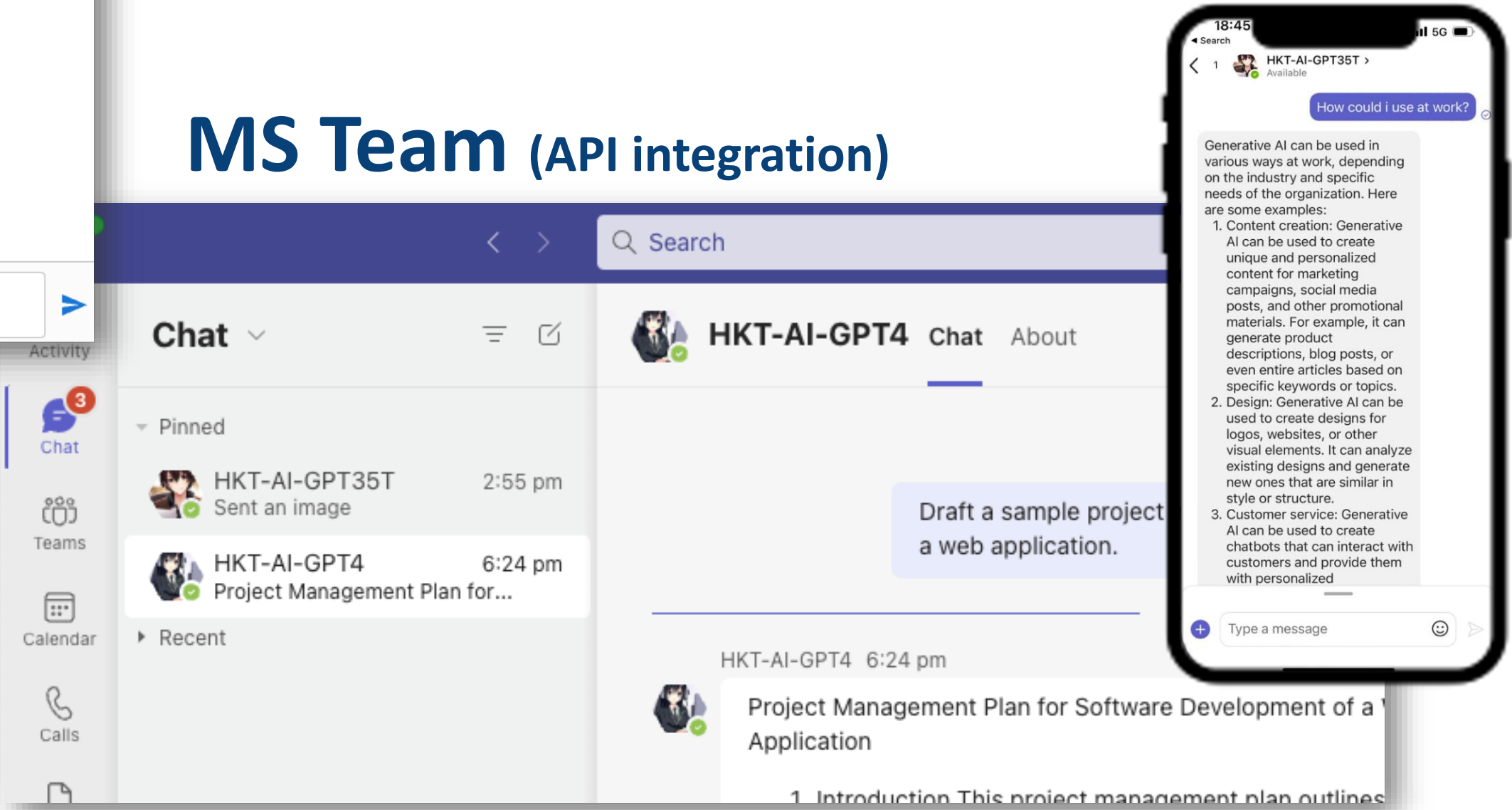
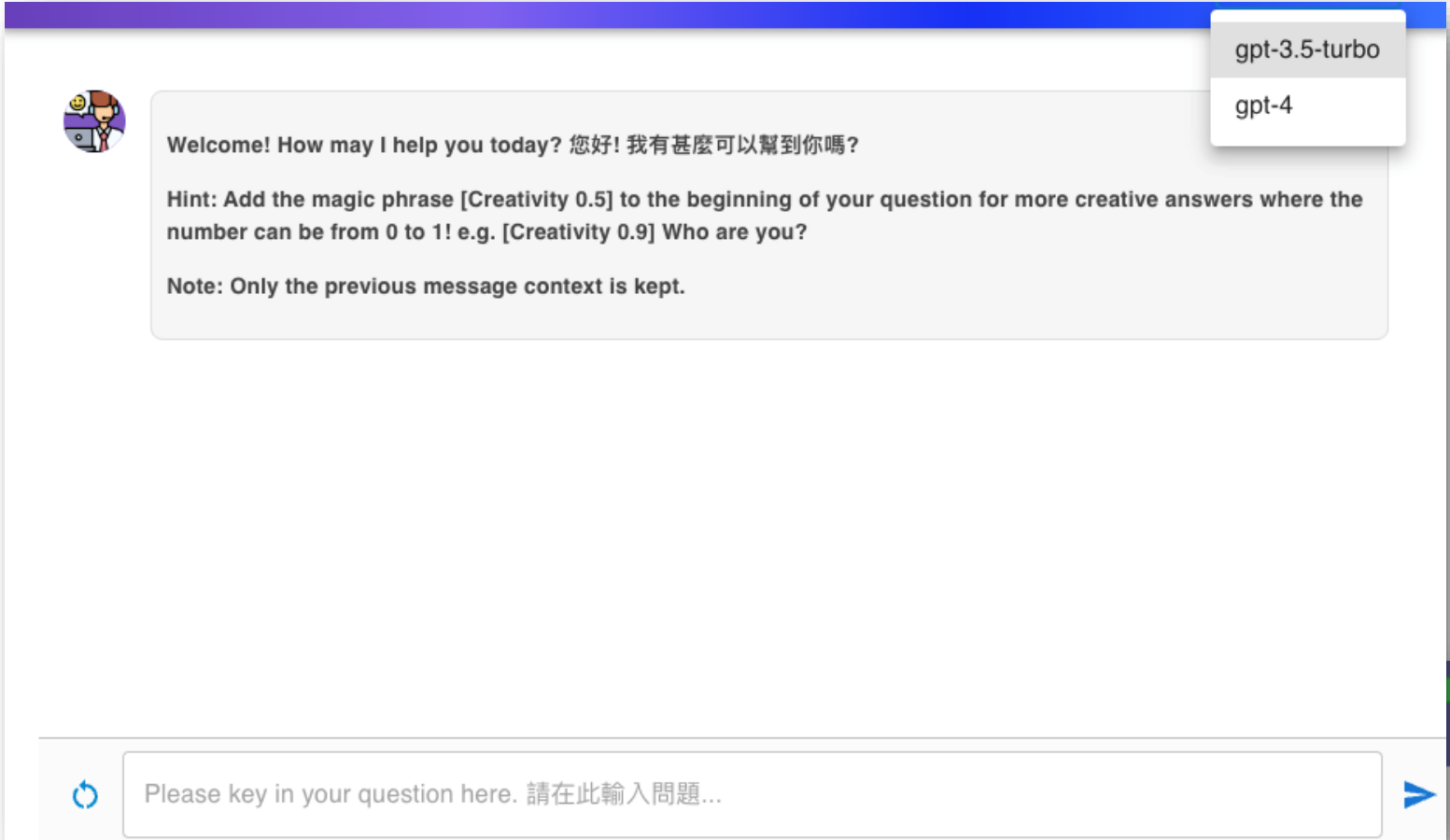
Simple user interface to support User data upload and manipulation
(supports multiple file formats)



Frontend access flexibility

WEB

MS Team (API integration)



Data Governance

Role Based Access Control and Approval

Upload Data

Refresh

Bulk Action

Search for a file

File Type: All .xlsx .pdf .csv

File Tagging: None

	Size	Status	Security Detection	Classifications	Tagging	AI Search	Upload At	Approval	Action
ruitment	391.78 KB	Pending Approval		Internal Use		Not Ready	2025-05-15 10:41:12 By .@pccw.com	Approve Reject & Delete	
partment n.pdf	376.76 KB	File Index Successful and Approved		Internal Use		Ready	2025-05-13 10:14:25 By .@pccw.com		

Status

Security Detection

Pending Approval

PII Detected

with potential disruptions and limited

Go Admin Panel

Reviewer for the second-tier approval of uploading internal use/confidential/strictly confidential files.

No Bot Reviewer in this bot

Upload Data

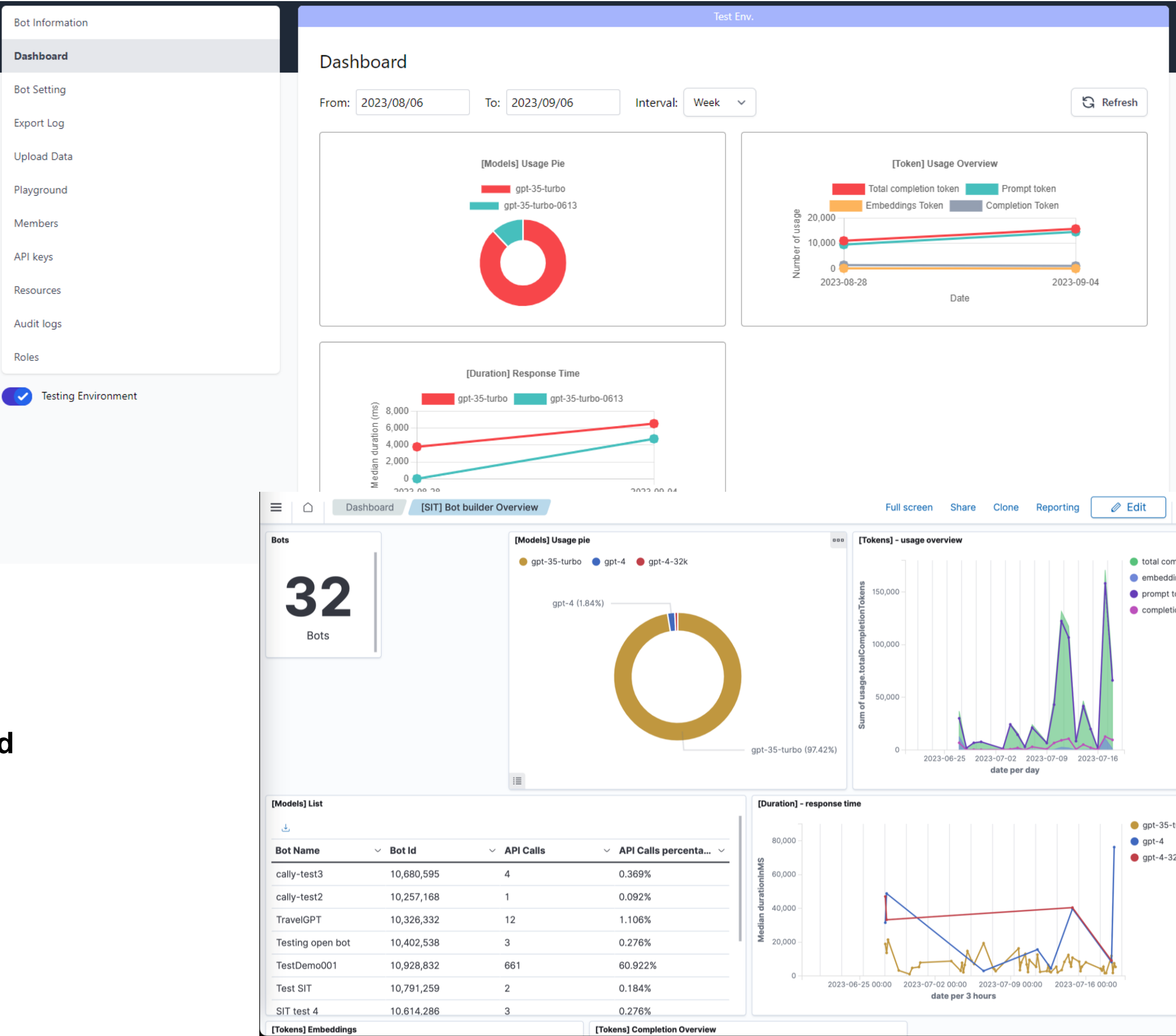
Search for a file

ID	File name	Size	Classifications	Status	Security Detection	Upload At	Action
17896	Summary.pdf	2.11 MB	Public Domain	Pending Approval	PII Detected	2024-06-28 17:16:30 By kavlyvk.lai@pccw.co m	Approve Reject & Delete
17808	Summary.pdf	2.11 MB	Public Domain	File Index Successful and Approved	PII Detected	2024-06-25 15:23:56 By kavlyvk.lai@pccw.co m	
17807	product-code.xlsx	9.09 KB	Public Domain	File Index Successful and Approved	No PII Detected	2024-06-25 15:23:39 By kavlyvk.lai@pccw.co m	
17806	Datasheet.pdf	513.41 KB	Public Domain	File Index Successful and Approved	PII Detected	2024-06-25 15:23:33 By kavlyvk.lai@pccw.co m	

Dashboard & Analytics

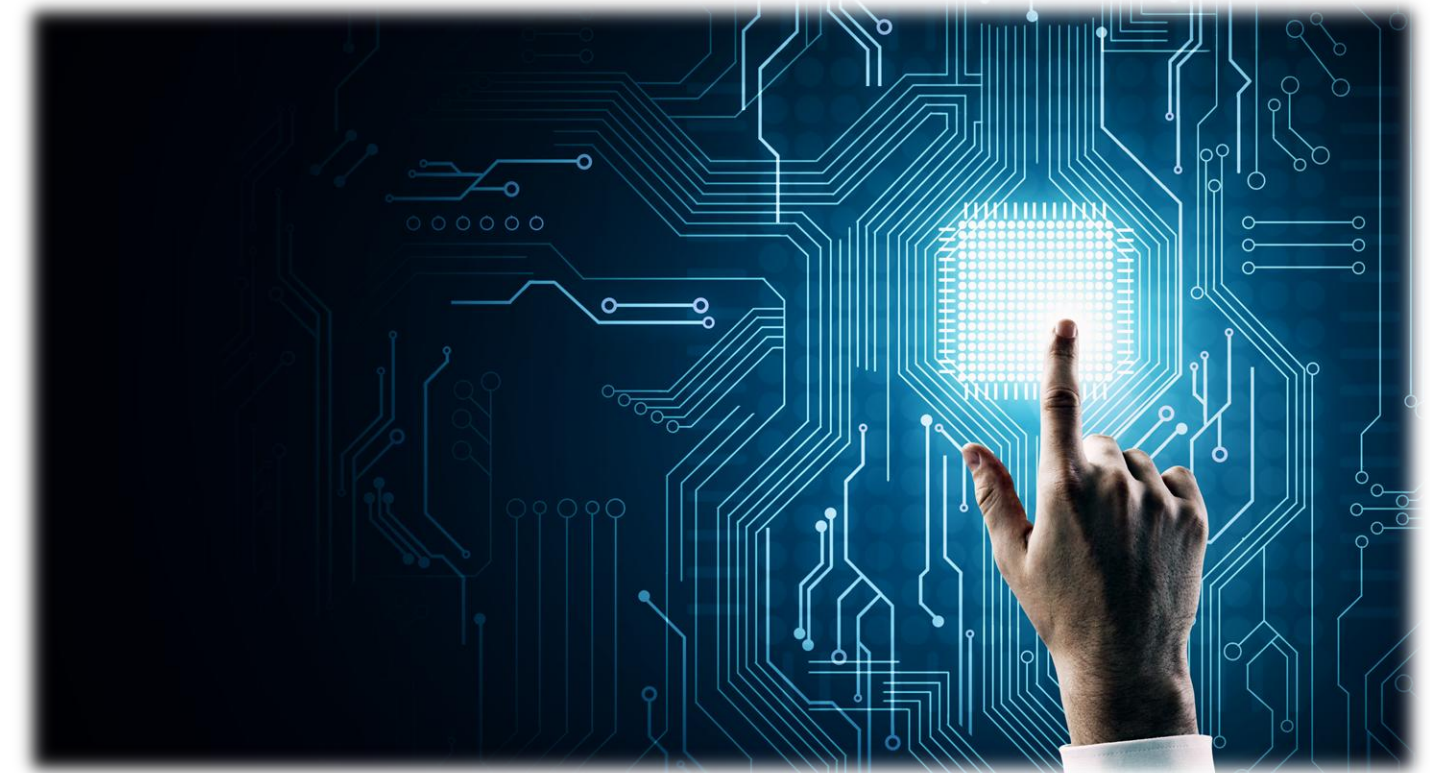
Monitor Usage and Performance

- Usage - # Active Users, # Requests, # Token Used
- Performance – Avg Response Time
- Export of Data, Filter and Dimension



Recommended Business Use Cases

- **Knowledge Base For Internal Staff Usage**
- **Assist Operation Automation**
- **Support Customer Services & Enquiries**



Thanks